

The Carrington Centre, Eccleston Existing Area Plan



EXISTING USES

- Shop Retail, Non Food
- Shop Retail, Food
- Financial/ Professional Services
- 43 Public House
- 44 Hot Food Takeaway
- 45 Garage/ Motor Reps/ Sales
- Office/ Light Industrial
- General Industrial
- Storage/ Distribution
- Residential, non residential
- 71 Public Retail, Educational/ Leisure
- 80 Sports and Leisure

EXISTING FLOOR AREAS

1-5 New Mill Street	sq m	sq ft
78	820	880
82	880	950
105	1,120	1,210
88	920	990
421	4,540	4,900
Shopping Centre	108	1,160
98	1,040	1,120
96	1,000	1,080
10	100	1,080
82	860	920
155	1,620	1,750
32	340	360
40	420	450
52	550	590
80	840	900
17	180	190
45	480	510
21	220	240
19	200	210
882	9,200	9,900
TOTAL	2,845	3,080

TOTAL Business Centre

80	820
82	880
88	920
96	1,000
105	1,120
108	1,160
110	1,140
112	1,160
114	1,180
116	1,200
118	1,220
120	1,240
122	1,260
124	1,280
126	1,300
128	1,320
130	1,340
132	1,360
134	1,380
136	1,400
138	1,420
140	1,440
142	1,460
144	1,480
146	1,500
148	1,520
150	1,540
152	1,560
154	1,580
156	1,600
158	1,620
160	1,640
162	1,660
164	1,680
166	1,700
168	1,720
170	1,740
172	1,760
174	1,780
176	1,800
178	1,820
180	1,840
182	1,860
184	1,880
186	1,900
188	1,920
190	1,940
192	1,960
194	1,980
196	2,000
198	2,020
200	2,040
202	2,060
204	2,080
206	2,100
208	2,120
210	2,140
212	2,160
214	2,180
216	2,200
218	2,220
220	2,240
222	2,260
224	2,280
226	2,300
228	2,320
230	2,340
232	2,360
234	2,380
236	2,400
238	2,420
240	2,440
242	2,460
244	2,480
246	2,500
248	2,520
250	2,540
252	2,560
254	2,580
256	2,600
258	2,620
260	2,640
262	2,660
264	2,680
266	2,700
268	2,720
270	2,740
272	2,760
274	2,780
276	2,800
278	2,820
280	2,840
282	2,860
284	2,880
286	2,900
288	2,920
290	2,940
292	2,960
294	2,980
296	3,000
298	3,020
300	3,040
TOTAL	6,870

TOTAL FLOOR AREA 9,715 (10,400)

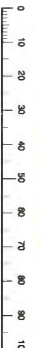
NORTHERN TRUST GROUP

partcock partners
architects and planners

1805-106-A 17/03/21 15 April 2021



The Carrington Centre, Eccleston Proposed Area Plan



NORTHERN TRUST GROUP
 product partners partnerships
 architects and planners

1805-107-A 1750041 16 April 2011

FLOOR AREA	No	sq m	sq ft
New Retail Commercial Centre	2182	83,340	
107	1,150		
70	750		
82	880		
70	750		
106	1,140		
142	1,520		
70	750		
ST1	86	1,030	
ST2	71	770	
ST3	71	770	
ST4	46	500	
ST5	227	2,240	
TOTAL	3,812	42,090	
New Housing Site			
3 bed Flat Terrace	4	860	
3 bed Semi	14	86	880
4 bed Semi	15	130	1,400
4 bed Detached	2	4,150	4,470
TOTAL	33	4,926	
TOTAL FLOOR AREA		47,016	50,500



EXISTING AND PROPOSED USES

- Single Retail Non Food
- Group Retail Food
- Financial/Professional Services
- AS
- A4
- A1
- Hotel Food Takeaway
- Bar/Range/News/Event Station
- Office/Light Industrial
- General Industrial
- Storage/Distribution
- Residential non residential
- Club/Leisure/Entertainment/Leisure
- Sports and Leisure

NEW HOUSING

- Residential Circulation
- Vertical Circulation
- Service Circulation



The Carrington Centre, Eccleston Proposed Site Plan



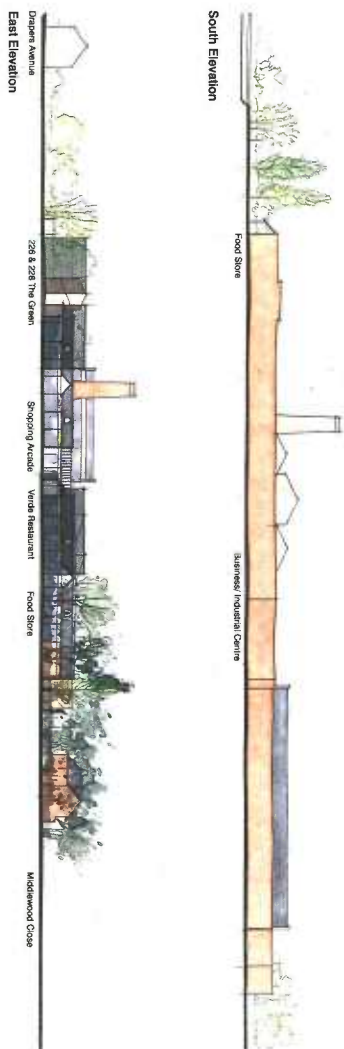
FLOOR AREAS	No	sq m	sq ft
New Retail/Commercial Centre	2,182	25,440	
1st Floor	142	1,650	
2nd Floor	70	750	
3rd Floor	52	580	
4th Floor	70	750	
5th Floor	108	1,400	
6th Floor	142	1,520	
7th Floor	70	750	
8th Floor	52	580	
9th Floor	71	770	
10th Floor	71	770	
11th Floor	28	280	
12th Floor	28	280	
13th Floor	28	280	
14th Floor	28	280	
15th Floor	28	280	
16th Floor	28	280	
17th Floor	28	280	
18th Floor	28	280	
19th Floor	28	280	
20th Floor	28	280	
21st Floor	28	280	
22nd Floor	28	280	
23rd Floor	28	280	
24th Floor	28	280	
25th Floor	28	280	
26th Floor	28	280	
27th Floor	28	280	
28th Floor	28	280	
29th Floor	28	280	
30th Floor	28	280	
31st Floor	28	280	
32nd Floor	28	280	
33rd Floor	28	280	
34th Floor	28	280	
35th Floor	28	280	
36th Floor	28	280	
37th Floor	28	280	
38th Floor	28	280	
39th Floor	28	280	
40th Floor	28	280	
41st Floor	28	280	
42nd Floor	28	280	
43rd Floor	28	280	
44th Floor	28	280	
45th Floor	28	280	
46th Floor	28	280	
47th Floor	28	280	
48th Floor	28	280	
49th Floor	28	280	
50th Floor	28	280	
51st Floor	28	280	
52nd Floor	28	280	
53rd Floor	28	280	
54th Floor	28	280	
55th Floor	28	280	
56th Floor	28	280	
57th Floor	28	280	
58th Floor	28	280	
59th Floor	28	280	
60th Floor	28	280	
61st Floor	28	280	
62nd Floor	28	280	
63rd Floor	28	280	
64th Floor	28	280	
65th Floor	28	280	
66th Floor	28	280	
67th Floor	28	280	
68th Floor	28	280	
69th Floor	28	280	
70th Floor	28	280	
71st Floor	28	280	
72nd Floor	28	280	
73rd Floor	28	280	
74th Floor	28	280	
75th Floor	28	280	
76th Floor	28	280	
77th Floor	28	280	
78th Floor	28	280	
79th Floor	28	280	
80th Floor	28	280	
81st Floor	28	280	
82nd Floor	28	280	
83rd Floor	28	280	
84th Floor	28	280	
85th Floor	28	280	
86th Floor	28	280	
87th Floor	28	280	
88th Floor	28	280	
89th Floor	28	280	
90th Floor	28	280	
91st Floor	28	280	
92nd Floor	28	280	
93rd Floor	28	280	
94th Floor	28	280	
95th Floor	28	280	
96th Floor	28	280	
97th Floor	28	280	
98th Floor	28	280	
99th Floor	28	280	
100th Floor	28	280	
TOTAL	3,912	42,800	
TOTAL FLOOR AREA	4,150	44,740	
	8,900	95,800	



NORTHERN TRUST GROUP
 preece johnson partnership
 architects and planners
 1805-108-A 17000A 15 April 2011



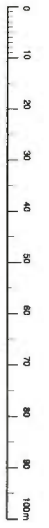
AS EXISTING



AS PROPOSED



The Carrington Centre, Ecclestone Outline Massing Elevations





NORTHERN TRUST GROUP

 parruck johnson partnership

 architects and planners

 1805-115 1800N1 20 April 2011